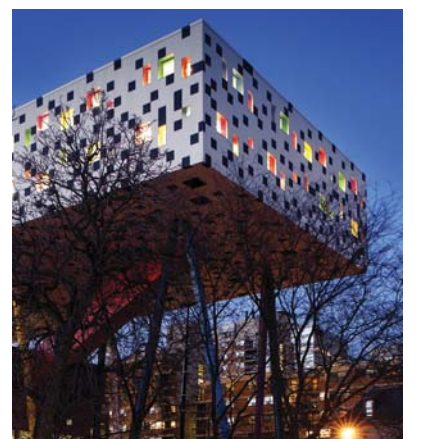


▲ **Queen Mary, University of London**  
The new building brings together many departments dispersed across a number of sites in a single collaborative research environment. The radical layout of the laboratory space encourages flexible working and breaks down knowledge silos.

The workings of the building are made transparent and its supporting amenities are aimed at informing the public and children about modern medical research.  
Client: Queen Mary & Westfield College.  
Value: £34million. **Completion:** May 2005.



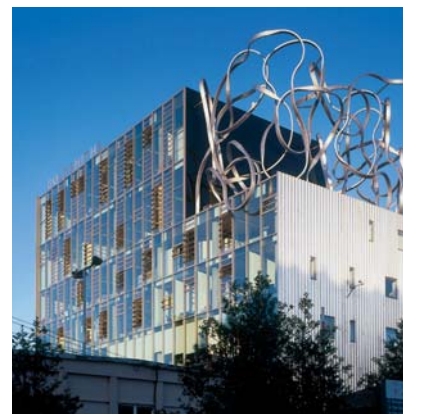
▲ ► **OCAD**  
The refurbishment and expansion of the existing Ontario College of Art and the new Sharp Centre for Design has seen a 22% increase in the amount of students using the studio space and a three fold increase in new applicants. OCAD is an instant landmark for the emerging cultural quarter in Toronto and a point of pride for the local community.  
Client: Ontario College of Art & Design.  
Value: £25million. **Completion:** Summer 2004.



▲ **Imperial College Gateway**  
Alsoop were invited by the College to prepare designs for a major new gateway as part of a limited competition. The new gates revolve around a central gatehouse and incorporate lighting and display.



▲ **King's College London, Institute of Psychiatry**  
Alsoop are currently working with the IOP on proposals for the re-modelling of the main library and entrance building to the Denmark Hill campus. The project aims to break down some of the stigma attached to mental health.



▲ **Goldsmiths College, University of London**  
A recognised brand leader in the teaching of the arts, Goldsmiths College has suffered from its own success and expanded rapidly. The new building delivers much needed world class studio space essential to attracting new students and the best teaching staff. It is hoped that the new building will be the catalyst for future re-development of the campus as the College seeks to integrate itself within the local community.  
Client: Goldsmiths College, University of London.  
Value: £6.3million. **Completion:** January 2005.

## ALSOP

London

Parkgate Studio

41 Parkgate Road

London SW11 4NP

Tel: +44 (0)20 7978 7878

Fax: +44 (0)20 7978 7879

Web: www.alsoparchitects.com

1:1 Architects

Melbourne

31 Niagara Lane

Melbourne VIC 3000

Tel: +61 3 9624 8700

Web: www.one2one.net.au

## HIGHER EDUCATION

Educational buildings are amongst the most rewarding building types that an architect can work with. It is no accident that many of our highest quality places of learning and research are housed in some of our most beautiful buildings and environments. Traditionally the best of these buildings have helped to create an environment that stimulates debate, creativity and a sense of well being which compliments the quality of the curriculum. In recent years these buildings, with one or two exceptions have tended to be seen as the simple provision of space at the lowest possible cost often resulting in high cost in use as well as a demotivated learning community.

Our belief in an inclusive design process has led to work across the spectrum of education including major new buildings for Goldsmiths College, Queen Mary & Westfield College and the Ontario College of Art and Design.

The School of Medicine and Dentistry at Queen Mary's is intended to encourage the recruitment of high calibre staff and students and provide outstanding research and clinical care facilities, bringing together the many departments currently dispersed across a number of sites, to work in a single collaborative research environment.

The aim is to create a space that avoids the traditionally sanitised environment of laboratory research buildings. Here the fabric of the building 'speaks' about science and creates an environment which stimulates the imagination and is conducive to better science by bringing researchers together.

At Goldsmiths we have developed the masterplan for the new Arts Complex that delivers world class studio and research space in two phases. The complex is one of the key developments in the Local Authority's Creative Lewisham initiative that aims to improve New Cross and Deptford through the support of the creative sector as a catalyst for regeneration. The first phase was completed earlier this year and is designed as a robust metal box to reflect the tough studio space within. The roof terrace scribble has become an unmistakable landmark on the New Cross skyline.

The Ontario College of Art & Design (OCAD) was awarded the RIBA Worldwide Projects Award in 2004 and was conceived as a symbol for the re-emergence of the College as a leading cultural institution in the City of Toronto. The project unifies the existing brick structures beneath the 'table top', the historic park to the west and MacCaul Street to the East.

The building symbolises our belief in the possibilities of education and the inherent strengths of community consultation and participation.

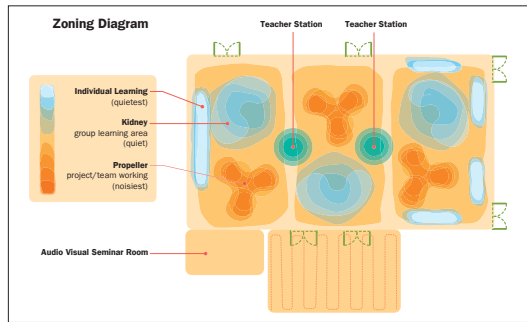
'This building breaks the mould in terms of science practice in the UK. Our vision was to create a light and airy building researchers will enjoy working in, and, crucially, one which promoted cross-fertilisation and the sharing of ideas.'

'This means that teams working on genetics, for example, can work closely with those in Cancer and HIV/AIDS which will pay dividends in increasing research output.'

'Research institutions and medical schools compete for the best research teams on a global basis these days, and I am confident that the state-of-the-art facilities and environment on offer in this building will help us to attract scientists from other leading institutions.'

Professor Nick Wright,  
Warden of Barts and The London, Queen Mary's School of Medicine and Dentistry

# BUILT PEDAGOGY



The brief and design for the learning plaza has been developed through regular design meetings with New Line Learning involving pupils and senior staff. The space is divided into three groups of 'bases'. Each base has up to 30 pupils in it who have access to a range of different learning areas: a group working area, a 30 person plenary area and individual desk positions. The furniture is not fixed and can be reconfigured to achieve different layouts.



The furniture design is crucial to the success of the Plaza as a learning environment. A number of different products have been selected and designed to suit a range of learning styles. Individual desk positions are around the perimeter of the room. Wall space is limited so the desks are integrated into the walls along with storage and display areas. The group working areas are formed into propeller shapes to encourage discussion and group activity around a more fluid and comfortable desk shape. This allows a single group discussion or a



The Learning Plaza is an ongoing project that will inform the design and layout of the innovative learning environments within the proposed new Oldborough & Senacre Schools in Maidstone, UK. Both Oldborough and Senacre schools are currently operating significantly under capacity. This presents the opportunity to redevelop the schools on a single site with the benefit of shared amenities and new accommodation designed for the 21st century.

In the New Line Learning model the pupils own their own space within large open plan Learning Plazas. Teachers move and for the most part, students remain in one place spending up to 70% of their time in plazas as a year group. 90 children in years 7 & 8 moved into the new Plaza in January 2007 and together with the teaching staff have been taking part in a series of induction exercises to familiarise themselves with their new learning environment.

A design team led by Alsop developed the concept and fit-out design for the Learning Plaza and are currently progressing the Outline Planning application for the co-location of the two schools on a single site. A masterplan has been developed for the site that incorporates a new vocational centre, sports facilities and an existing farm within a landscaping strategy that reinforces the surrounding landscaping pattern. Both schools are radical departures from the typical DfES guidelines for secondary school design and incorporate Learning Plazas in lieu of standard classrooms. This reduces the overall area requirement and cost for the delivery of the new buildings. The mock-up offers a unique opportunity to develop and learn from the design and use of a prototypical Learning Plaza before the new schools are fully designed and constructed. It is therefore important that the delivery of the mock-up is not seen as the end of a process but is seen as a test bed for new ideas and exploration of the spaces capabilities.

Intended to encourage the recruitment of high calibre staff and students and provide outstanding research and clinical care facilities, the new School of Medicine and Dentistry will bring together the many departments currently dispersed across a number of sites, to work in a single collaborative research environment. Large volumes of open plan flexible laboratories will be provided together with write-up, study and meeting spaces. The building also features a range of much needed supporting amenities, including: a 400-seat lecture theatre and The Centre of the Cell, an interactive educational facility aimed at informing the public about modern medical research. Part of a larger masterplan for the Royal London Hospital area, the site was occupied by a number of disused buildings within the existing Queen Mary campus. The School of Medicine and Dentistry building has pre-empted pedestrianisation of the neighbouring street and offer new public and semi public space. The design exploits the full depth of the site to create a new public space or "open mews" that continues the pedestrian routes that will eventually be formed along Turner Street, Newark Street and Walden Street.

The design has developed around two core concepts:

Firstly, to bring about a better integration of the science disciplines. This is achieved by breaking down the traditional compartmentalisation between different departments through the provision of an open plan environment; both in the laboratory and the write up areas.

Secondly, the desire to create a building which broadcasts its purpose, achieved by the development of a selectively transparent building envelope.

The aim is to create a space that avoids the traditionally sanitised environment of laboratory research buildings. Here the fabric of the building "speaks" about science and creates an environment which stimulates the imagination and is conducive to better science by bringing researchers together.

The state of the art research facility provides the combination of large open plan primary laboratory areas with a perimeter of enclosed secondary space; appropriate to accommodate and anticipate the demands of changing research, including ACDP Cat 3 facilities. Highly visible through the glazed walls, the irregular range of pods include two suspended meeting room pods, an entrance and meeting pod and, most spectacularly, appearing as a giant molecule, The Centre of the Cell. A Wall of Plant sits between the open mews on one side and the new campus wide 400-seat ovoid lecture theatre (featuring a walled garden at roof level) on the other.



## ALSOP

London  
Parkgate Studio  
41 Parkgate Road  
London SW11 4NP  
Tel: +44 (0)20 7978 7878  
Fax: +44 (0)20 7978 7879  
Web: [www.alsoparchitects.com](http://www.alsoparchitects.com)

## 1:1 Architects

Melbourne  
31 Niagara Lane  
Melbourne VIC 3000  
Tel: +61 3 9624 8700  
Web: [www.one2one.net.au](http://www.one2one.net.au)

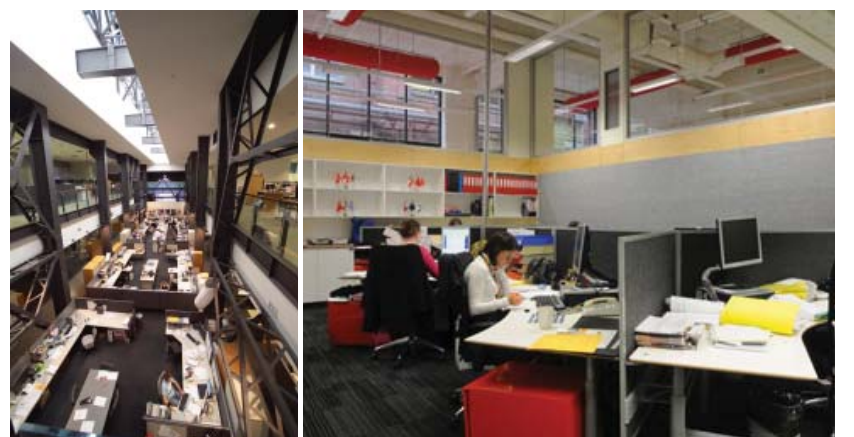
ALSOP have been delivering projects of outstanding quality for 30 years. Buildings and master plans of wide-ranging nature. We understand and applaud the vision of the Melbourne Plan, the majority of our work involves integration of community, University and Business. ALSOP has become well-known internationally for his innovation where architecture can foster and sustain community which leads to the social development of an area or city, which in turn leads to prosperity. A flagship regeneration project for the Borough of Southwark in South London. The Peckham Library brief called for a building of architectural merit which would bring prestige to the borough and engender a sense of ownership and pride for the building by local people. Alsop Architects created a building of unique appearance which satisfied

both criteria, comprising innovative solutions to design problems, creating working, archive and meeting spaces of genuine delight and stimulating appearance. Suspending the main reading room on a cantilevered allowed the creation of a new public space below the soffit. Within this room, "pods" contain meeting rooms and independent collections, with workstations clustered below. The centre pod opens to the clerestory, allowing daylight to enter the main space while the "beret" above affords shade. The library was conceived with sustainability in mind and has natural lighting and ventilation systems which significantly diminish both demands on energy resources and running costs.

RMIT Bundoora campus required the re-use of the existing student art & design building to provide a flexible student lounge, with offices, meeting and work spaces. 1:1 working closely with RMIT and the student user groups have designed a tailor made space with a long term view to allow for change and adaptation.

The unusual crescent shaped building provided the inspiration within which to insert a series of loose furniture and partition elements to create implied and more specific areas for the different student user groups. This allows for adaptation of the building over time as the requirements of the students change. 1:1 proposed to open up the entire north face of the building by cutting a series of large openings within the perimeter wall controlled via a series of coloured, double storey sliding doors allowing the interior to flow out onto a courtyard space.

# THE ACADEMIC ENVIRONMENT



## Will Alsop

There is an assumption that 'good architecture' can help to improve education by providing a more stimulating environment. Environment is undoubtedly important, but it is not the only way that architects can help. We are not only architects, but parents, observers, holiday makers, commuters et al. On top of which some of us work in a very broad band of businesses, people and problems. We are therefore in a very good position to contribute to the issues surrounding education and assist in imagining a future beyond the physical re-examination of the fabric of a building.

Flexibility and Adaptability are key to the exemplar design brief. I always suspect, however, that any teacher, parent or student, would be excited at the prospect of a large shed that would offer maximum flexibility by allowing each group to invent their own learning environment.

As a base proposition, this would allow and encourage schools to break away from the traditional requirements that most would expect to find in a school. If through testing we found a way of satisfying environmental needs, it could

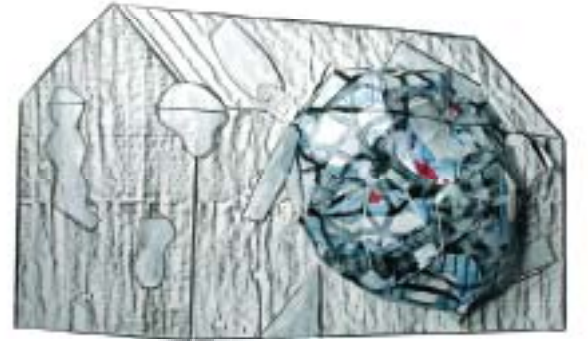
be very revealing to look at the use of the large industrial shed as a container for exploration.

A large factory would be ideal as a means of observing a school community trying to make sense of a large space. To be able to observe the creation of spaces, nests and privacy by different groups of people would be highly instructive and in itself be useful in exploring what a school might be in the future.

Schools need to develop a sense of belonging within the communities they exist in. At present they are very often a set of buildings set within a fence. They are separated from the world. In our BSF work, we have explored a community campus variant where there could be a link between 'earning and learning' – new models of the supermarket, a department store of learning, Local Youth Parliament accessible to all, gallery of artwork, music department as mini concert venue, cafes, bars, newsstands, school television, cinema as film club and spaces for making lots of noise (clubbing) etc. This model for the school can also be part of a mixed development with living spaces and workspaces from which revenue or capital could be put back into the school.

Architects are well placed to imagine the unimaginable, to dream the impossible and think the unthinkable. We wish to join the wider debate.

### Will Alsop

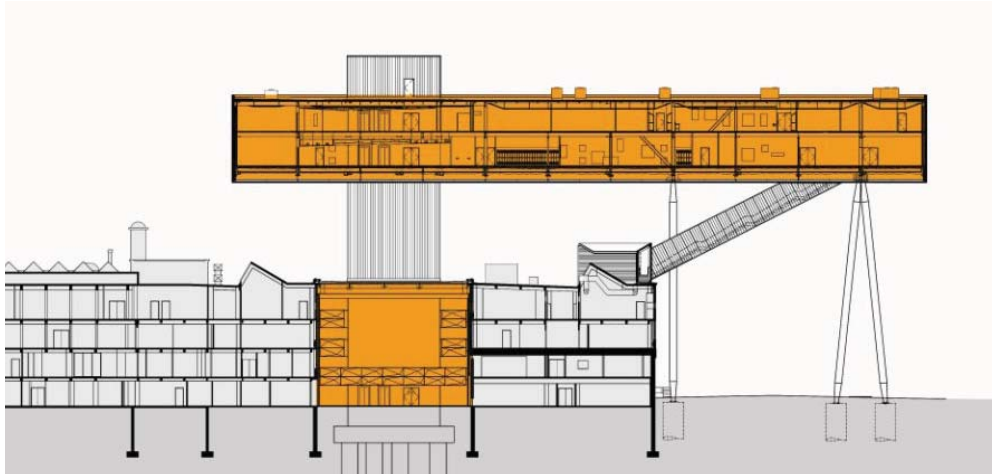


# THE DESIGN STUDIO



"The third strand of the triple helix—knowledge transfer—reflects direct, two-way interaction between the University and the communities it serves. This occurs in many ways, including the contribution of our research to issues of world significance, commercialisation of our knowledge, informing public debate and policy with evidence, formation of partnerships with other major organizations, and having a leadership and sponsorship role in cultural developments."

The Melbourne Plan 2008



## ALSOP

London  
Parkgate Studio  
41 Parkgate Road  
London SW11 4NP  
Tel: +44 (0)20 7978 7878  
Fax: +44 (0)20 7978 7879  
Web: [www.alsoparchitects.com](http://www.alsoparchitects.com)

Goldsmiths College has an international reputation as the incubator of British Art. The College has undergone rapid expansion over the last two decades and is in need of studio and teaching accommodation in order to retain this status. Alsop Architects were appointed after an open International competition in January 2002 to develop an overall vision for a New Arts Complex that would deliver in a number of phases much needed additional accommodation. The first phase delivers 3600sqm of teaching and studio facilities for the Visual Arts Department as well as digital media laboratories and a major new research unit, called the Centre for Cognition, Culture and Computation.

The Phase One building has been designed as a robust 7 storey box with an industrial aesthetic to reflect the rough and tough studio space within. Three sides of the box are clad in metal with punched windows for daylight and ventilation where required. A layer of metal surface relief breaks up the mass of the silver coloured metal cladding and casts shadows during the day. At night industrial light fittings scattered across the elevations throw pools of light and shadow across the metal surfaces. The large north elevation of the building is entirely glazed to flood the building with natural daylight and to reveal the unique mix of studios, digital media laboratories and scientific research laboratories within. A two storey chunk of the box space has been removed at high level to leave a roof terrace for outdoor working and display and this is wrapped with metal structural scribble making the building an unmistakable landmark on the south London skyline.

A distinctive cultural force in Ontario, OCAD's impetus to expand comes with a growing recognition at national level of the contribution of the creative industries to Canada's modern economy. The decision to employ Alsop was based upon a significant track record in the design of cultural buildings of enduring effectiveness and appeal which also offered iconic representation of the client body as the school enters a new age.

Following the appointment to the project, Will Alsop instigated a series of client workshops in which early concepts were developed with college staff and students. During this time, conventional ideas of teaching, learning and architecture were explored as the group sought to redefine their new college of art and design. The participants of the workshops exchanged sketches and ideas that lead to the development of a basic strategy. These original ideas are embodied in the final scheme, a flying, translucent rectangle or 'table top' vividly patterned with a colourful pixelated skin, raised eight storeys from the ground and housing the new Faculty of Design.

The project unifies the existing brick structures beneath the 'table top,' the park to the west and McCaul Street to the east. Views to the park are preserved for OCAD's neighbours across McCaul Street, who participated in the consultation process. The park will also benefit from the area's regeneration and, restored, will be the home to contemporary sculpture and school events.

Programming works in collaboration with OCAD and Alsop have accommodated all the elements of a complex client group. In addition to the teaching and administrative spaces the project also incorporates gallery spaces, design and research centres, lounge and meeting rooms, specific craft and metalwork workshops and design critique spaces.

The college satisfies its aspirations to revive a neglected area of town by inviting in the public to visit galleries and cafe spaces in the new building. OCAD contributes distinctive design and revived public areas, internal and external to this quarter of the city.

The new 4,000 sq m Carnegie Pavilion will replace and upgrade the existing Yorkshire County Cricket Club facilities at Headingley Carnegie Cricket Ground, whilst providing first class teaching space for Leeds Met.

During the summer period, the proposal will operate mainly as a cricket pavilion and media centre, whilst during the academic year, the proposed development will operate mainly as a University teaching faculty, allowing students access to 'real world' modern media facilities, sporting, hospitality and event management experiences.

Alsop's response to the joint client brief and the physical constraints of the site, which is bounded on three sides, is to create a powerful verdant building that blends in well with its surroundings. The pavilion provides accommodation for a mix of uses on five floors for both clients - and the England and Wales Cricket Board's (ECB) requirements for test matches - while also enhancing daylighting and privacy of the adjacent residential buildings, and connecting the green spaces around the pavilion with the locality.

Plans include: a state-of-the-art media centre; an upgrade of player facilities such as changing rooms and treatment rooms; and replacement spectator seating, new executive boxes and associated facilities. The new hospitality suites and media centre have been designed as lecture theatres and teaching space for use outside major cricketing events.

The sustainability strategy involves creating one dual-use building which will be used all year around, and is designed to achieve an environmental assessment (BREEAM) rating of Excellent.



#### Utilising roof spaces for amenity

The roof unit workshop is a flexible modular system, designed to adapt to varying scale rooftops and respond to differing site conditions and functional requirements. This concept proposes a floor grid system that can accommodate various modular options including but not limited to paving, grass, plants, trees and furniture. We envisage the roof unit as part test laboratory part amenity space which purposefully overlap to allow people to see and experience the workings of a green roof.

#### Burnley park pavilion.

As a vision of the future of public facilities, a proposal was drawn up to integrate water-saving initiatives such as rainwater collection and grey water treatment. Offering a unique form of sustainable design encompassing user-focused and friendly facilities, Burnley Park Pavilion is designed to reduce demand on services, integrating systems such as solar hot water systems and natural ventilation. The building is to be completed mid 2009



# THE LIVING BUILDING

Palestra is Alsop's first contribution to the rapidly developing Bankside quarter, south of the Thames. The opening of the Tate Modern and better communications - the Jubilee Line Extension and Alsop's forthcoming Thameslink 2000 station at Blackfriars (with links to Luton and Gatwick airports) - make this potentially one of the most dynamic cultural and commercial growth points of London.

The key idea of this bold speculative commercial scheme is the provision of big, straightforward and highly flexible floor plates, which can be used in open plan or cellular formats.

The building takes the form of a raised box, with retail and restaurant space at ground level, where public routes penetrate the development. The offices are arranged in two distinct planes, separated by an open level of "social space". The appearance of the building belies its basically simple diagram.

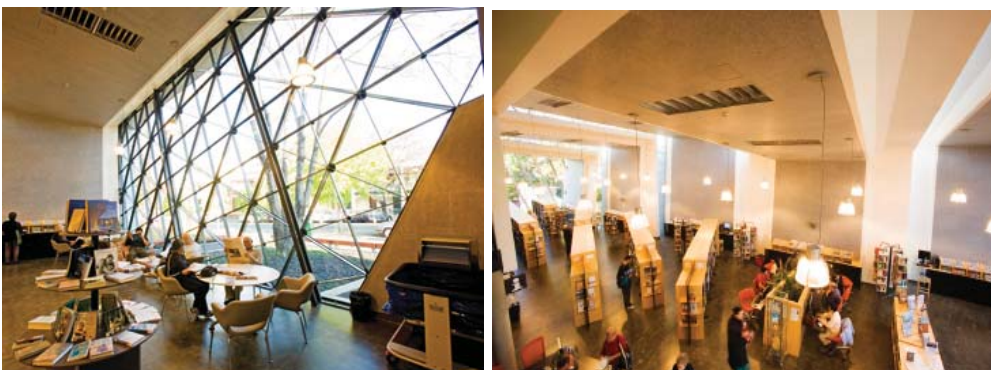
The facades make use of the most advanced glazing technology, with benefits not only in terms of working environment and climatic controls but equally for the public. The glazing incorporates a bold abstract pattern that are impermeably bonded into the individual glass sheets - and thus becomes a huge artwork challenging the idea that speculative office space need be visually boring or environmentally negative.

In 2007 the project was awarded the prestigious RIBA award for best building in the region. The London Development Agency (LDA) moved into Palestra on 25 September 2006. The LDA believe that the landmark building will provide the LDA with improved working conditions that benefits their services to London, its people and its environment.

It was chosen after a detailed evaluation, negotiation and selection process of a number of buildings that met the location and accommodation criteria. Palestra was the only building evaluated that had a Building Research Establishment Environmental Assessment Method rating (BREEAM - Very Good rating).

The London Development Agency has also introduced a combined renewable energy system - making it a unique building in London - the only building with combined photovoltaic cells and wind turbines with 63kWp of photovoltaic panels on the roof and 21kW of wind turbines (14 turbines) also on the roof.

The combined renewable energy system will generate 3,397,000kWh of renewable electricity and reduce carbon dioxide CO2 emissions by 3,300 tonnes during its lifetime. The project is funded by the London Climate Change Agency.



#### East Melbourne Library

1:1 were commissioned to work with Melbourne city projects to design and document the internal fit out of a new library in East Melbourne. The brief emphasised the importance of environmental sustainability within the design, leading 1:1 to question the traditional joinery design and methodology in providing a unique design solution. The internal materials were selected to minimise environmental impact and maximise indoor air quality, with standardised components maximising potential for reuse, and minimise the use of chemical adhesives. Built in joinery items were avoided and loose furniture provided to allow for flexibility and future re-planning.

## Selected projects completed in last five years:

The Public  
Community Arts Centre  
West Bromwich, UK  
Contract value \$42 million. Completed 2008

Palestra  
Office Development  
London, UK  
Contract value \$140 million. Completed 2006

Blizard Building, Queen Mary College, University of London  
University- Laboratories & Research  
London, UK  
Contract value \$68 million. Completed 2005  
Reference Contact: Bill Hunt, Estates Office Queen Mary College w.l.hunt@qmul.ac.uk

Clarke Quay  
Mixed Use Development  
Singapore  
Contract Value \$70 million. Completed 2005

Ben Pimlott Building, Goldsmiths College  
College- Studios and associated spaces  
London, UK  
Contract value \$14 million. Completed 2005  
Reference Contact: Nick Grimmer, Studio Manager Goldsmiths College n.grimmer@gold.ac.uk

The Sharp Centre for Design, Ontario College of Art & Design  
College- Studios and associated spaces  
Toronto, Canada  
Contract value \$50 million. Completed 2004  
Reference Contact: Peter Caldwell, Vice-President OCAD pcaldwell@ocad.ca

East Melbourne Library.  
Completed 2005  
Reference  
"The appointed architect was Juliet Moore, who managed the stakeholder and briefing process excellently, developing a clear set of documents and engaging the key representatives from Council and Yarra Melbourne Regional Library Corporation in a positive and cooperative design process. Part of the briefing from Council required a progressive and innovative approach that harnessed strong environmentally sustainable principles to complement the overall building fabric. 1:1 Architects exceeded Council's expectations on this scale with the final outcome demonstrating industry leadership. The overall performance of 1:1 Architects has been outstanding in terms of meeting the tight timelines, solving a difficult brief and their ongoing availability for queries and issue resolution, and Juliet has been reliable and proactive throughout the process. I would be pleased to answer any queries relating to their involvement in this project."  
Nathan Islip - Project manager City of Melbourne

# CAPABILITY AND PROCESS

From our experience as architects to the education sector worldwide, these are our thoughts as to the design process:

**Project Champion**  
CABE outlines in their advice to Clients that before any Client body undertakes initial analysis of a building programme, they need to test their own capacity and skills base and, where required, recruit the necessary skills. They highlight that Clients tend to have good financial and legal advice but are often seriously under-represented by those who can advise on design quality. To assist in securing better design it is suggested that they appoint a design champion for projects, preferably a senior member of the College. The Design Champion's remit is to promote design issues within the context of the University's wider policies on design, creativity and inclusion. The College needs to identify this individual from the start of the process and they should be trusted and empowered to bring up issues regarding design throughout the process. This role is not for status but for action.

**Client Representatives**  
A steering group is required to drive the project brief development with senior staff representing the building users. It is important that they consult with the building users at all stages of the project so that they are aware of decisions made on their behalf

**Building Users**  
It is fundamental to consult and encourage the building users to participate in the briefing and design process. Regular updates and consultation must take place with the actual intended users of the space. It is important to not only involve those who will work in the new building but also those that will maintain it.

**Continuity**  
It is difficult for academic staff to see a project through from inception to completion and teaching, overseas work and other commitments will inevitably impact upon their involvement. It is important to maintain continuity by ensuring that there are a number of people involved in the process who can make decisions on the behalf of others.

**New Programmes**  
New programmes can be difficult to deliver as there is likely to be no existing model within the College or user body to consult. It is fundamental that the leaders of a new programme area are fully engaged in the briefing process.

**New Ways of Working**  
Many academic departments work in a set way and cellular office space is often their first requirement. This assumption must be challenged as it is space hungry and prohibits a collaborative, dynamic working environment. Similarly many areas that have a clear ownership within a department are often under utilised and can not be shared across the College as Bookable space. Ownership and the flexibility of space to be used by others needs to be challenged at the briefing stage.

**Social Space**  
Increasingly new blended learning environments are emerging that allow students to work in informal groups outside of formal structured lectures and seminars. This creates informal social areas that are also learning environments. Social break out areas between departments without access to networks or ICT are difficult to manage, take ownership of and present security issues.

**Alsop** is a leading European architectural, masterplanning, urban design, landscape design and multimedia practice and is part of the Archial Group of companies; one of the largest architecture groups in the UK. Alsop is committed to architecture of delight and enjoyment, reached through a process that involves the building users, the client and the local community. Community involvement is seen as a vital ingredient in the design process. In addition Alsop's buildings are known for their bold and often dramatic incorporation of art. Close collaboration with artists is often reinforced by an innovative use of new materials and a bold use of colour.

Over the last 20 years the award-winning company has built extensively across Europe and in Russia and established an international reputation for buildings that bring merit to their location and joy to their users. The Company's significant experience in regeneration projects includes the £97million Regional Government Headquarters in Marseilles; The Cardiff Bay Visitors' Centre; North Greenwich Tube Station; Peckham Library (named Building of the Year as winner of the RIBA's Stirling Prize 2000) and the 18-storey Colorium Tower on the Dusseldorf waterfront.

The last few years have seen a tremendous expansion in the spread and type of commissions awarded to Alsop throughout the UK and overseas. In the UK the Company has become increasingly involved in complex urban design and 'visioning' studies for a number of Northern towns in need of regeneration, notably Barnsley, Bradford, Halifax, Stoke on Trent, and Walsall as well as major development plan and new build for Urban Splash at New Islington in Manchester. In London, several major projects have recently completed: the Ben Pimlott Building, a major new building for Goldsmiths College, University of London; the Blizard Building, a new School of Medicine and Dentistry for Queen Mary University of London; and Palestra, Alsop's first contribution to the rapidly developing Bankside quarter. In addition to an extensive range of work in the Europe, Alsop has completed projects in North America: the Ontario College of Art and Design's Sharp Centre was awarded a RIBA prize for an International Building of the Year.

The Company's first major project in the Far East, the re-development of Clarke Quay in the historic quarter of Singapore has also recently been completed. The project provides an animated combination of new public/leisure facilities and commercial office space next to a revitalised waterfront. In addition Alsop is currently involved in design proposals for major new schemes in the Middle East, Canada and in China, both in Shanghai and in Beijing.

**1:1 Architects** have a solid proven track record through previous work and also projects undertaken at previous practices. We are committed to high quality innovative design and as well as having a strong architecture background we have expertise in interior design and 'Green Star' which we aim to incorporate into our work.

We see architecture as a dialogue, a process involving listening, exchange and new ideas. We have worked on numerous projects requiring community consultation together with key stakeholders and enjoy the opportunity to present our ideas to a wider audience as well the chance to refine and tailor the designs for the building users and staff so as to meet their expectations and functional requirements. We have extensive experience in community consultation working with Yarra Council as well as within the educational sectors, the arts and housing, working with key stakeholders and focus groups. All projects within the office take their environmental impact seriously.

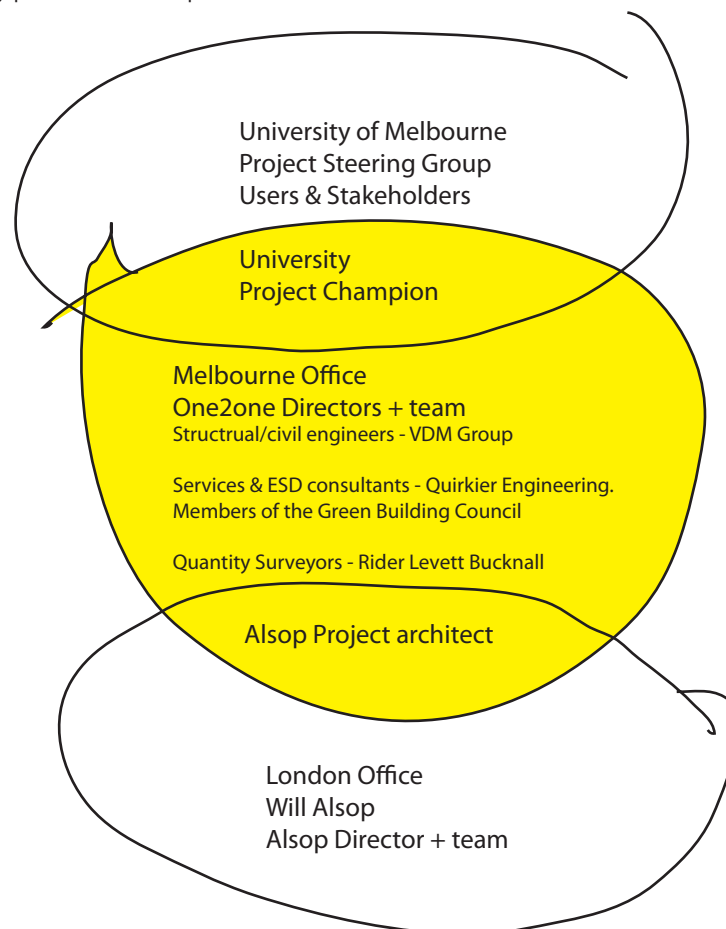
We strive to exceed 'Green star' assessment requirements and have recently been commissioned by RMIT to produce an independent rating document for all of their refurbishment projects with regard to interior fit out and product selection. 1:1 Architects are currently working on several community projects and consider it one of our responsibilities to give back to the community.

Juliet Moore, Project Director  
Trained in Liverpool UK and has worked in Melbourne for the past 11 years during which time Juliet has developed an extensive portfolio. She has driven projects of varying scale and assumed responsibility for projects of up to \$350m. Juliet's has had extensive experience in Library projects with a strong ESD brief, along with University experience working with RMIT  
Juliet's design sensibilities coupled with her management capabilities give her the ability to manage and coordinate projects of any nature or scale. Juliet Moore will act as the Project director and Team leader and will be responsible for the management and co-ordination of all aspects of the project and will be the first point of contact for all client correspondence for the project duration.

Directors Juliet Moore and David Nock founded 1:1 Architects in 2004 to deliver mid-scale architectural projects with a much-needed human scale. Since then 1:1 Architects has gone from strength to strength, expanding to 25 employees while holding fast to its original vision. We are responsible for a broad range of architectural projects nationwide, from bespoke residential construction to major commercial developments. We believe that great architecture is not just its own reward but that it can improve our quality of life. To champion exceptional architecture alongside environmental, economic and social best-practices. That's our promise and our motivation.

This design team is a joint venture which takes the architectural vision of Alsop and their experience in the education sector, and combines it with the local knowledge and delivery experience of One2one architects. The two practices share a common, fresh design approach and are confident that we will produce a building of world class to match the ambition of the University.

With Will Alsop and his team of education architects providing the overall vision for the building, the overlapping design teams will be located in London and Melbourne as required. The project architect will be relocated from London to work with the One2one directors and team in Melbourne and ensure perfect synergy between the two practices. Will Alsop will travel from London for all key presentations and workshops to ensure that his vision is tuned to the University's aspirations. He has successfully worked in this way to deliver buildings in Canada, China, Russia, Singapore as well as Europe.



**Prof. William Alsop OBE RA**  
**O. Univ. Prof. Dipl-Ing AA Dip RIBA BDA SADG FRSA OAA MRAIC**

Nationality: British  
 Date of Birth: 12.12.47  
 ARB ref: 045188F  
 RIBA ref: 4578691  
 Founder, Alsop Architects

Will Alsop is one of the UK's most prominent architects. His practice is an international operation guided by the principle that architecture is both vehicle and symbol of social change and renewal. This philosophy extends from the design of individual buildings to embracing broader principles of urbanism and city development. By abandoning the hegemony of an acceptable style, he has rendered the whole process of architecture one of increasing fluidity and transparency; as such he continues to uncover new and refreshing positions for architecture.

Will Alsop follows a parallel path as an artist; his stance is that art and architecture are inseparable disciplines. For several years, he was a tutor of sculpture at Central St. Martins College of Art & Design, London, continues to hold many academic posts around the world, and actively promotes artistic contribution to the built environment. His paintings and sketches have been exhibited alongside his architectural projects in dedicated exhibitions at Sir John Soane's Museum, Milton Keynes Gallery, Cube Gallery, Manchester, the British Pavilion at Venice Biennale and many others.

**Qualifications**

2005 Ontario Association of Architects (OAA)  
 2005 Member of The Royal Architecture Institute of Canada  
 2000 Royal Academician (RA)  
 1997 Member of the Bund Deutscher Architekten (BDA)  
 1996 Professor Vienna Technical University (Dipl-Ing)  
 1983 SociÉTÉ des Architectes DiplomÉS par le Gouvernement (SADG)  
 1981 Fellow Royal Society of Arts (FRSA)  
 1978 Chartered Architect (ARB)  
 Member of the Royal Institute of British Architects (RIBA)  
 Architectural Association Diploma (AADiploma)

**Honorary Positions and Awards**

2007 Honorary Doctorate, University of East Anglia  
 2006 Honorary Fellow, Queen Mary and Westfield College, University of London, Faculty of Building, Barbara Miller Award  
 2005 Honorary Fellow, University College Northampton  
 2004 Honorary Doctorate, Ontario College of Art & Design, Toronto  
 2003 Visiting Professor in Urban Art - School of Art & Design, Liverpool  
 2002 Honorary Fellow, Sheffield Hallam University  
 2001 Honorary Doctorate, University of Nottingham Trent, School of Architecture  
 2000 Officer of the British Empire (OBE)  
 1997 Visiting Professor, the London Institute  
 1996 Honorary Fellow of the Royal Society of British Sculptors  
 Honorary Doctorate of Law, Leicester University  
 1995 Member of the Russian Academy of Art  
 1994/98 Member of the Design Council  
 1992 Hamburgische Architektenkammer RhÜne

# MERIT

**Academic Appointments**

1999/ongoing Visiting Professor, Royal College of Art, London  
 1997/ongoing Professor, Technical University of Vienna  
 1990 Visiting Professor, University of Hanover  
 1988 Unit Master, Architectural Association  
 1986 Visiting Professor, Bremen Academy of Art & Music  
 1984 Visiting Professor, Royal Melbourne Institute Design  
 1984 Visiting Professor, New South Wales Institute of Technology  
 1982 The Davis Professor, Tulane University, New Orleans  
 1977 Visiting Professor, San Francisco Institute of Art  
 Visiting Professor, Ball State University, Indiana  
 1973 Tutor in Sculpture, St Martin's School of Art

**Selected Architectural Awards**

2008 Cityscape Asia Awards, Best Waterfront Development, Clarke Quay, Singapore  
 Cityscape Asia Awards, Best Future Mixed-Use Development, Raffles City, Beijing, China  
 2007 MIPIM Future Projects Awards, 'Big Urban Projects' Category: RiversideOne (Middlehaven Masterplan), Middlesborough, UK  
 Cityscape Architectural Review Awards, (Tourism, Travel & Transport- Built), Clarke Quay, Singapore  
 Cityscape Architectural Review Awards, (Tourism, Travel & Transport - Future), Shanghai Kiss, China  
 RIBA Commercial Building Prize for the London Region, Palestra, London, UK  
 Structural Steelwork Awards 2007, commendation, Palestra, London, UK  
 2006 RIBA Education Award, The Blizzard Building, London, UK  
 Civic Trust Award, Fawood Children's Centre, London, UK  
 Civic Trust Award, The Blizzard Building, London, UK  
 Hot Dip Galvanising Award, Highly Commended, Fawood Children's Centre, London, UK  
 Waterways Renaissance Award: New Islington, Manchester, UK  
 2005 RIBA London Region Award, Fawood Children's Centre, London, UK  
 RIBA Stirling Prize Short-list, Fawood Children's Centre, London, UK  
 Leaf Award, Best Use of Technology within a Large Scheme, The Blizzard Building, London, UK  
 AIA/UK Excellence in Design Awards, commendation: Fawood Children's Centre, London, UK  
 Royal Fine Art Commission Building of the Year - Special Award, Fawood Children's Centre, London, UK  
 Toronto Architecture and Urban Design Award: OCAD, Toronto, Canada  
 2004 DX Design Effectiveness Award, OCAD, Toronto, Canada  
 RIBA Worldwide Projects Award, OCAD, Toronto, Canada  
 2003 MIPIM - Future Project Prizes, The Public, West Bromwich, UK  
 AJ/Bovis Lend Lease Award for Architecture - RA Summer Show, Barnsley Masterplan, UK  
 Laureate Preservation of Historic Buildings Award, Speicher Am Fischmarkt, Hamburg, Germany  
 2002 AJ/Bovis Lend Lease Award for Architecture - RA Summer Show, SZ Family House of the Future  
 BDA Architecture Award, Speicher Am Fischmarkt, Hamburg, Germany

2001 Concrete Society Award, Cardiff Bay Barrage, UK  
 AIA London Chapter Design Award for Best Building, Peckham Library, London, Civic Trust Award, Peckham Library, London, UK  
 BCIA Award, Peckham Library, London, UK  
 Renault Design Award, Speicher Am Fischmarkt, Hamburg, Germany  
 2000 RIBA Stirling Prize, Building of the Year, Peckham Library, London, UK  
 BCIA Award, North Greenwich Jubilee Line Station, London, UK  
 RIBA Civic and Community Architecture Award, North Greenwich Jubilee Line Station, London, UK  
 1999 RIBA Award, North Greenwich Jubilee Line Station, London, UK  
 Concrete Society Award, North Greenwich Jubilee Line Station, UK  
 1997 RIBA Worldwide Projects Award, Le Grand Bleu, Marseille, France  
 RIBA Civic & Community Architecture Award, Le Grand Bleu, Marseille, France  
 1995 PalmarÈs Award for Architecture, Le Grand Bleu, Marseille, France  
 1991/92 Paraplegic Facilities Special Prize, Berlin Olympics 2000  
 Architectural Prize, Potsdamer/Leipziger Platz  
 White Rose Award, Leeds Corn Exchange, UK  
 RIBA National Award, Cardiff Bay Visitor's Centre, UK

**Selected Architectural Competition Prizes**

2007 First Prize: Michael Faraday School, London  
 Second Prize: Hamburg Ferry Terminal & Hotel  
 Special Mention: Singapore Gardens by the Bay  
 2006 First Prize: Peckham Square, Liverpool, UK  
 2005 First Prize: Fourth Grace, Liverpool, UK  
 2003 First Prize: Walsall Waterfront, UK  
 2002 First Prize: Goldsmiths College  
 Special Mention: Duxton Plain Public Housing, Singapore  
 1999 Special Prize: Oslo Opera House, Oslo, Norway  
 1996 2nd Prize: UK Embassy, Berlin, Germany  
 1994 Short-listed: Tate Modern, London, UK  
 1993 First Prize: : Swansea Centre of Literature, Swansea, UK  
 1991/92 Special Prize: Potsdamer/Leipziger Platz, Berlin, Germany  
 1990 First Prize: Hotel du DÈpartement des Bouches-du-Rhone, Marseille, France  
 1971 2nd Prize: Centre Pompidou, Paris, France

**Selected Exhibitions**

2008 Quick on the draw, Touring exhibition  
 2007 Towards..., Chelsea Space, London  
 Jack in the Box, Finland  
 Bradford, MOMA New York  
 Future City, The Barbican, London,  
 Cultural Fog, Olga Korper Gallery, Toronto,  
 Bathing Beauties, The Hub:National Centre for Craft & Design, Lincolnshire  
 Royal Academy Summer Exhibition, London  
 Creative Prisons, Touring exhibition  
 2005 Supercities, Urbis, Manchester  
 Groundswell; MoMA, New York City  
 Picture a City, Bradford Masterplan film by Squint Opera  
 2004 Middlehaven Masterplan, Venice Biennale  
 2002 Malagarba Works, Will Alsop & Bruce McLean: Milton Keynes Gallery  
 All Barnsley Might Dream, Venice Biennale  
 Beauty, Joy & the Real, Sir John Soane Museum, London  
 Not Architecture, Aedes East Gallery, Berlin  
 2001 Venice Biennale  
 2000 National Institute of Architecture (NAI), Rotterdam  
 Alsop Paintings & Architecture, Architekturgalerie,Stuttgart  
 1998 River of Dreams, Mayor Gallery, London  
 1997 Exhibition of Paintings, Beatrix Gallery, London  
 1996 Exhibition of Paintings, Westcliffe Gallery, Norfolk  
 1995 Exhibition of Paintings, The Mayor Gallery, London  
 Exhibition of Paintings, Galerie Lilli Bock, Hamburg  
 1994 Selected Projects Exhibition, Aedes Gallery, Berlin  
 1992 Arc en RÎve, HÛtel du DÈpartement, Marseilles, Bordeaux  
 Fluid Forms/Fluid Functions, Edinburgh  
 1991 Bridge/Beam/Floor/Roof, The Architecture Centre, Bremen  
 1987 Paris Biennale Exhibition  
 1985 Five Young Architects Exhibition, Artnet Gallery, London  
 1975 Forty London Architects Exhibition, Artnet Gallery, London  
 1974 Group Exhibition: Fruit Market, Edinburgh  
 Radical Architecture Exhibition, Padua  
 Two Man Exhibition, Compendium Gallery

**Selected Publications**

2004 Supercity, Urbis  
 2003 The Ideal City: 2nd Valencia Biennial, Charta  
 2002 Bruce McLean and Will Alsop, Malagarba Works, Wiley-Academy  
 Will Alsop Book 2, Laurence King Publishing  
 Will Alsop Book 1, Laurence King Publishing  
 2001 Master Architects Series: Alsop & Stormer, Images Publishing  
 1999 New Urban Environments, Royal Academy of Arts, London  
 1998 Power to Change, BBC Wales  
 1995 Architecture in Process, Academy Editions  
 1994 Le Grand Bleu, Academy Editions  
 William Alsop & Jan Stormer - Monograph no. 33, Academy Editions  
 1993 William Alsop: Buildings & Projects, Phaidon  
 1992 City & Objects, Artemis

**Panel Appointments**

2009/ongoing Kensington and Chelsea Architectural Advisory Board  
 2001/03 Yorkshire Forward Urban Renaissance Panel  
 2004/ongoing Thames Gateway International Design Committee  
 2000/07 Chairman of Architectural Foundation - London

**1:1 Architects** first award-winning building The East Melbourne Library was completed within 2 years of the practice being founded, and received the winning IDEA 07 award for Sustainability. We have been involved in several sustainable projects and assisted the City of Melbourne in creating an ESD rating tool for furniture for the CH2 office project.

1:1 Architects has recently won Best New Institutional Building for Roberts McCubbin Primary School with the City of Whitehorse, Building a Better City Design Awards 2008. Proud of the end result, the school independently entered this project into the local council awards.

**Publications**

2009 Architecture Australia 2009 - Regrowth pod  
 2009 Indesign - Regrowth pod  
 2009 The Age - After the bushfires  
 2009 Australian Construction Review - Charles Sturt University  
 2007 In Design Magazine - East Melbourne library

**Awards**

2009 Roberts McCubin - City of Whitehorse -Best new institutional building  
 2007 Idea award for sustainable design - East Melbourne Library